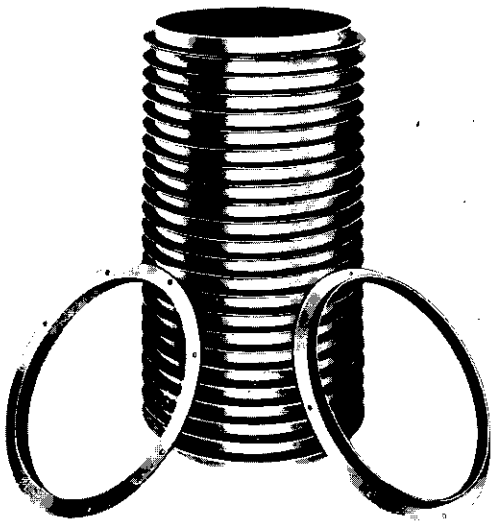
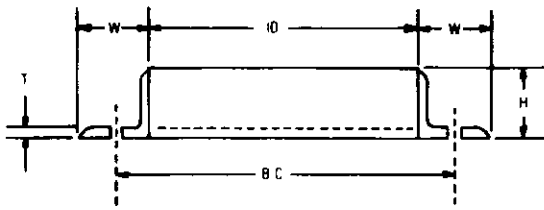


Stock Angle Rings, Pressed and Rolled Steel



K&B pressed and rolled steel angle rings are used widely in joining ductwork together in dust and fume control work. All rings are of black steel, unpainted. Most sizes are in stock for immediate shipment. Through 14" diameter, angle rings are press formed, and above 14", roll formed and welded. They are available with or without holes—bolts not included. Larger angles, channels, bars and other sizes rolled to order in steel, aluminum, stainless and other alloys. Square and rectangular flanges are also available. All angle rings and flanges are punched on automatic equipment.

	S/Z	H	W	T	D	NO HOLES	SIZE HOLES	B.C.	WEIGHT LBS	
PRESSED	3		7/8	1	10 Ga	3 1/16	6	9/32	4 5/16	.70
	4		1 1/16	1	10 Ga	4 1/16	6	9/32	5 5/16	.85
	5		1	1	10 Ga	5 1/16	6	9/32	6 5/16	1.18
	6		1	1	10 Ga	6 3/32	6	9/32	7 5/16	1.38
	7		1	1 1/8	10 Ga	7 1/8	6	3/8	8 1/2	1.73
	8		1	1 1/4	10 Ga	8 1/4	6	3/8	9 5/16	1.90
	9		1 1/8	1 1/4	10 Ga	9 1/8	6	7/16	10 5/8	2.55
	10		1 1/4	1 3/8	10 Ga	10 1/4	6	7/16	11 13/16	3.05
	11		1 1/4	1 3/8	10 Ga	11 1/4	6	7/16	12 3/4	3.25
	12		1 1/4	1 1/2	10 Ga	12 1/4	8	7/16	14	3.88
	13		1 1/2	1 1/2	10 Ga	13 1/2	8	7/16	15	4.25
	14		1 1/2	1 1/2	10 Ga	14 1/2	8	7/16	16	4.75
	15		1 1/2	1 1/2	3/16	15 1/2	8	7/16	17	7.25
	16		1 1/2	1 1/2	3/16	16 1/2	8	7/16	18	8.00
	17		1 1/2	1 1/2	3/16	17 1/2	8	7/16	19	8.25
	18		1 1/2	1 1/2	3/16	18 1/2	8	7/16	20	8.50
	19		1 1/2	1 1/2	3/16	19 1/2	12	7/16	20 3/4	8.75
	20		1 1/2	1 1/2	3/16	20 1/2	12	7/16	21 1/4	9.50
	21		1 1/2	1 1/2	3/16	21 1/2	12	7/16	22 3/4	10.25
	22		1 1/2	1 1/2	3/16	22 1/2	12	7/16	23 3/4	10.75
	23		1 1/2	1 1/2	3/16	23 1/2	12	7/16	24 1/4	11.25
	24		1 1/2	1 1/2	3/16	24 1/2	12	7/16	25 1/2	11.50
	25		1 1/2	1 1/2	3/16	25 1/2	16	7/16	26 1/2	12.00
	26		2	2	3/16	26 1/2	16	7/16	28 3/4	16.75
27		2	2	3/16	27 1/2	16	7/16	29 3/4	17.38	
28		2	2	3/16	28 1/2	16	7/16	30 3/4	18.00	
29		2	2	3/16	29 1/2	16	7/16	31 1/4	18.75	
30		2	2	3/16	30 1/2	16	7/16	32 3/4	19.50	
31		2	2	3/16	31 1/2	16	7/16	33 3/4	20.38	
32		2	2	3/16	32 1/2	16	7/16	34 3/4	20.75	
33		2	2	3/16	33 1/2	16	7/16	35 3/4	21.25	
34		2	2	3/16	34 1/2	16	7/16	36 3/4	22.00	
35		2	2	3/16	35 1/2	16	7/16	37 3/4	22.50	
36		2	2	3/16	36 1/2	16	7/16	38 3/4	23.00	
37		2	2	3/16	37 1/2	24	7/16	39 3/4	23.75	
38		2	2	3/16	38 1/2	24	7/16	40 3/4	24.50	
39		2	2	3/16	39 1/2	24	7/16	41 3/4	25.00	
40		2	2	3/16	40 1/2	24	7/16	42 3/4	25.75	
41		2	2	3/16	41 1/2	24	7/16	43 3/4	26.13	
42		2	2	3/16	42 1/2	24	7/16	44 3/4	26.50	
43		2	2	3/16	43 1/2	24	7/16	45 3/4	27.38	
44		2	2	3/16	44 1/2	24	7/16	46 3/4	28.00	
45		2	2	3/16	45 1/2	24	7/16	47 3/4	28.63	
46		2	2	3/16	46 1/2	24	7/16	48 3/4	29.00	
47		2	2	3/16	47 1/2	24	7/16	49 3/4	29.88	
48		2	2	3/16	48 1/2	24	7/16	50 3/4	30.75	
49		2	2	3/16	49 1/2	24	7/16	51 3/4	31.50	
50		2	2	3/16	50 1/2	24	7/16	52 3/4	32.00	
52		2	2	3/16	52 1/2	24	7/16	54 3/4	33.75	
54		2	2	3/16	54 1/2	24	7/16	56 3/4	35.00	
56		2	2	3/16	56 1/2	24	7/16	58 3/4	36.25	
58		2	2	3/16	58 1/2	32	7/16	60 3/4	37.50	
60		2	2	3/16	60 1/2	32	7/16	62 3/4	38.75	
62		2	2	3/16	62 1/2	32	7/16	64 3/4	40.00	
64		2	2	3/16	64 1/2	32	7/16	66 3/4	41.50	
66		2	2	3/16	66 1/2	36	7/16	68 3/4	42.75	
68		2	2	3/16	68 1/2	36	7/16	70 3/4	44.00	
70		2	2	3/16	70 1/2	36	7/16	72 3/4	45.25	
72		2	2	3/16	72 1/2	36	7/16	74 3/4	46.50	

12 per box 24 48
24 pieces per bundle 30
12 pieces per bundle
6 pieces per bundle